

TAV. N.  
**5E**

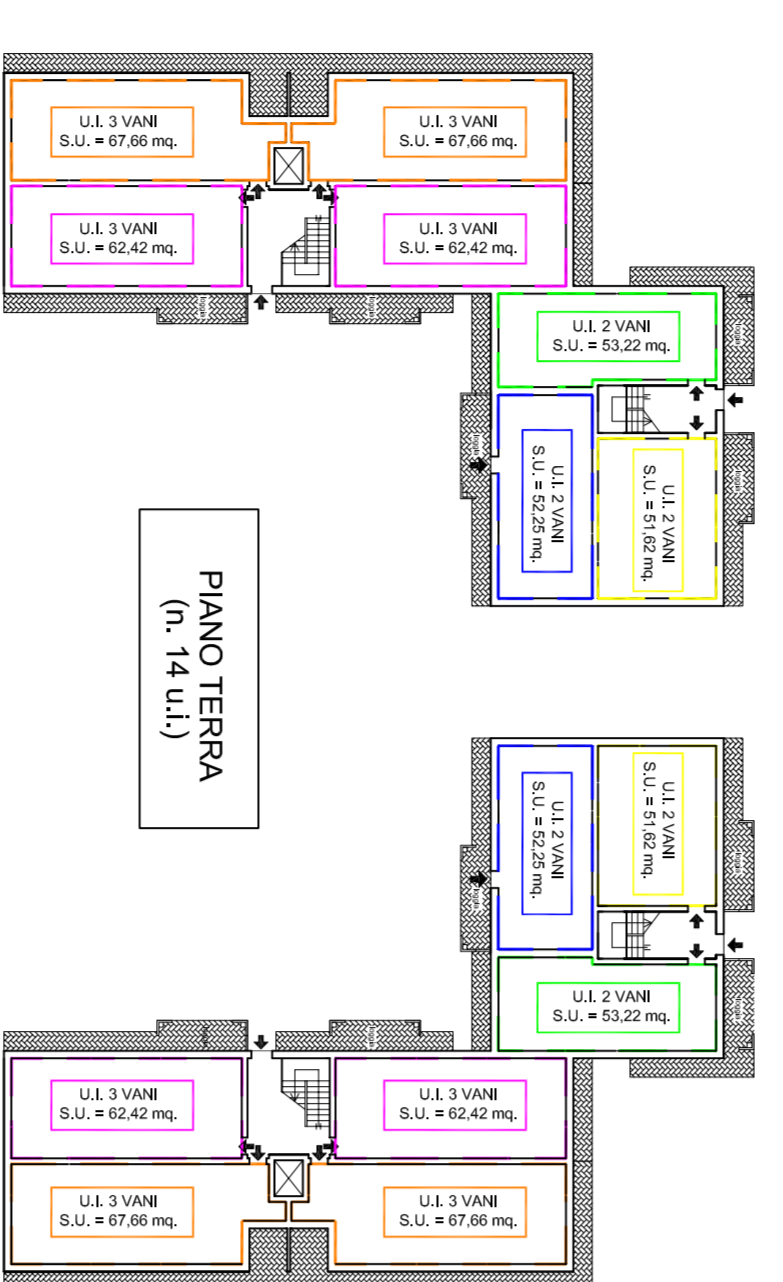
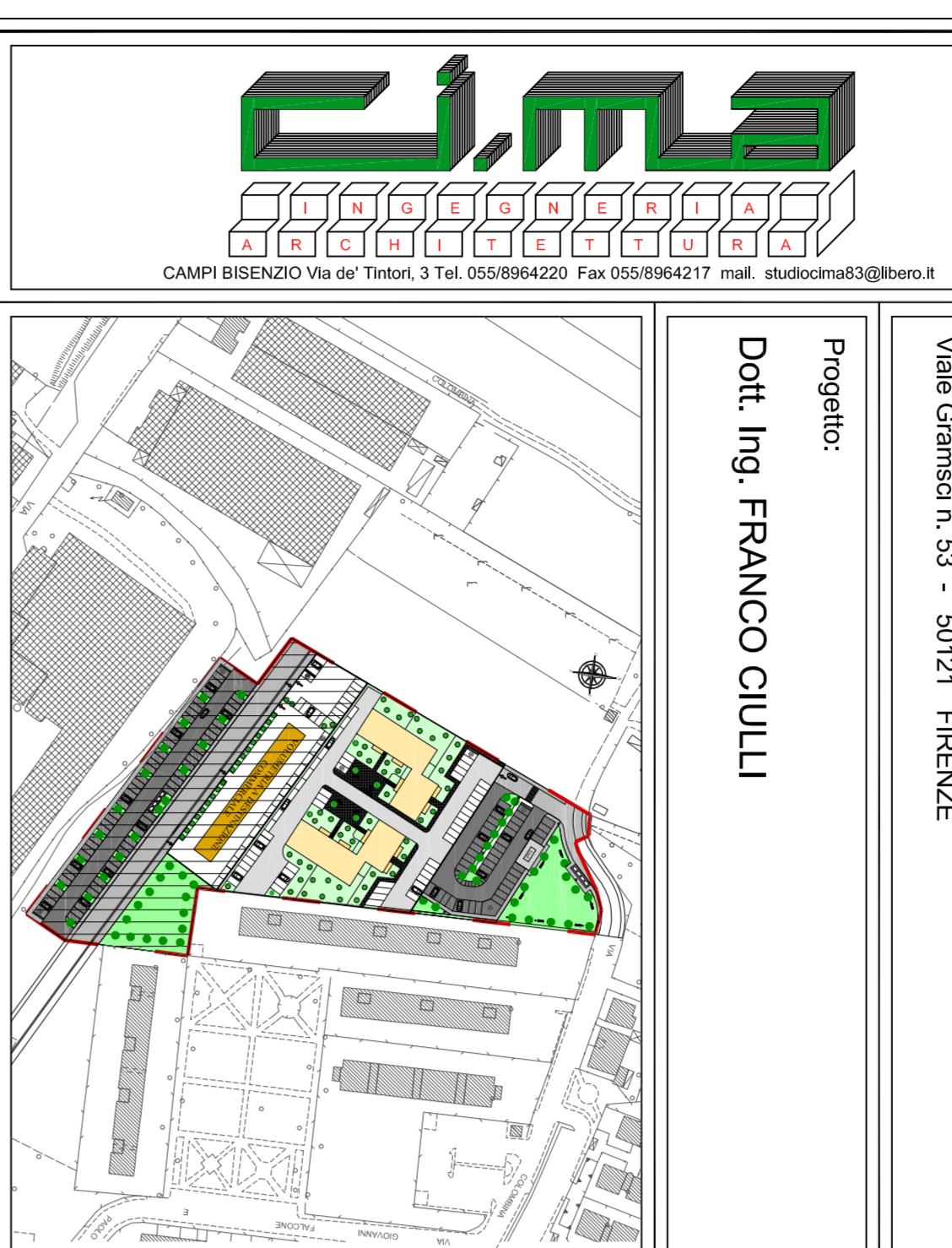
**PIANO DI MASSIMA UNITARIO**  
P.M.U. 4.9B

VIA COLOMBINA, LOC. LA VILLA-CAPALLE  
CAMPI BISENZIO (FI)

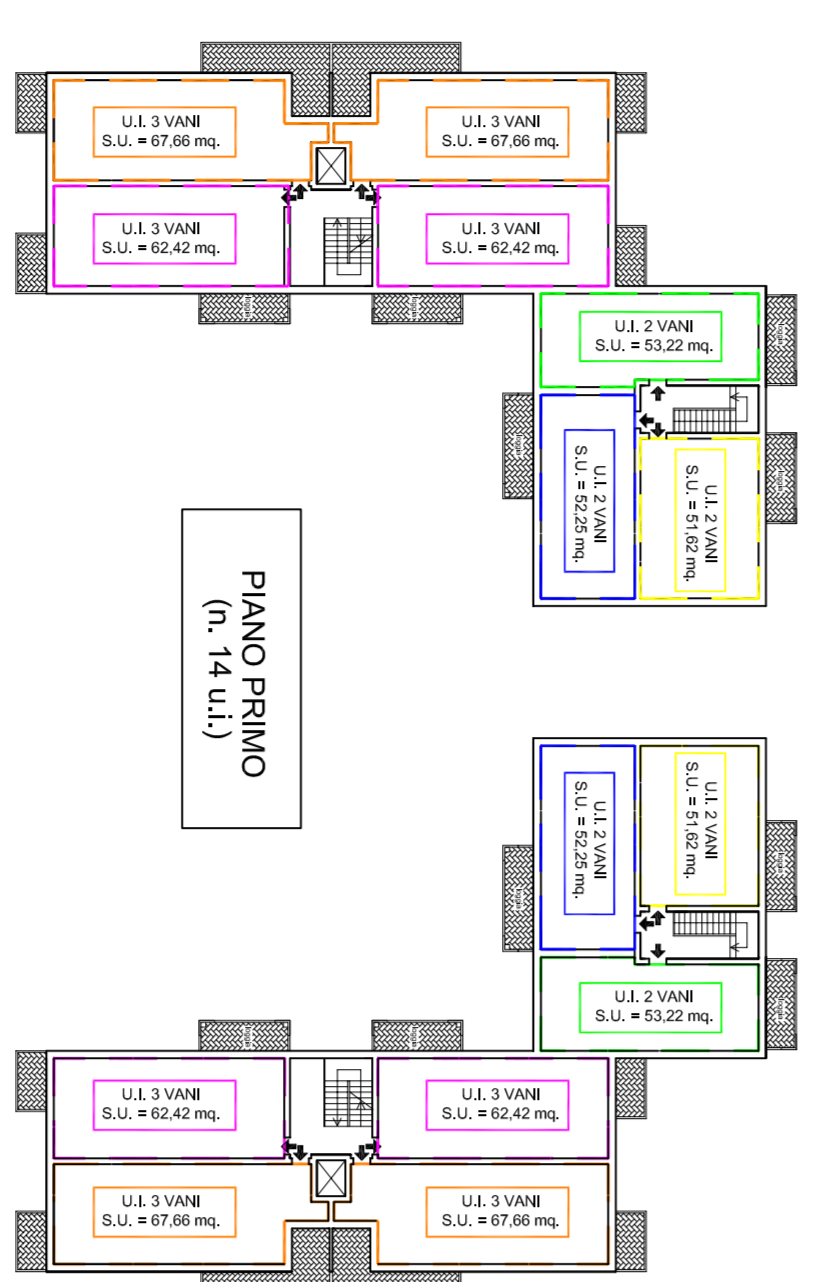
Scale: 1:200  
Data: 10/2014  
Aut.: 02/2015  
Oggetto: **E - PROGETTO PLANVOLUMETRICO**  
- tipi edilizi: piano

Proprietà:  
**SOC. COOPERATIVA UNICA**  
Viale Garibaldi n. 53 - 50121 FIRENZE

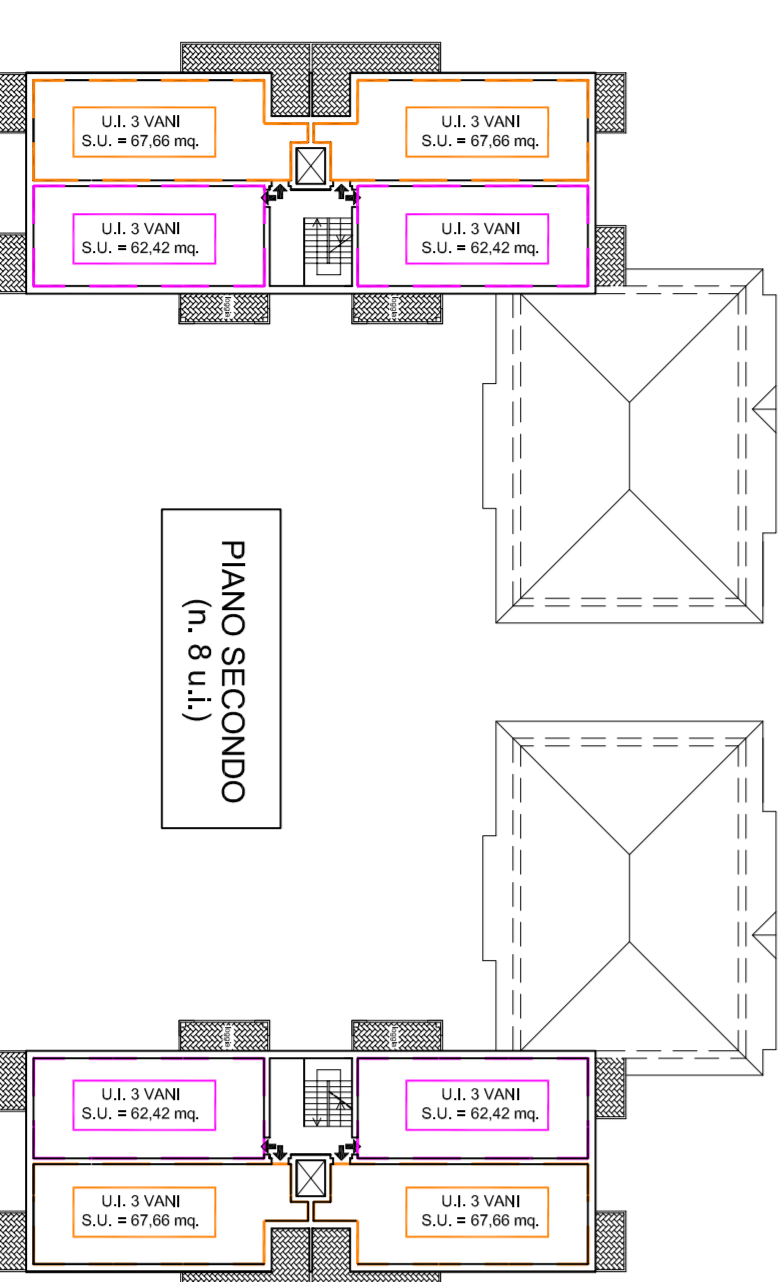
Progettista:  
**Dot. Ing. FRANCO CIULLI**



PIANO TERZA  
(n. 4.141)



PIANO PRIMO  
(n. 4.142)



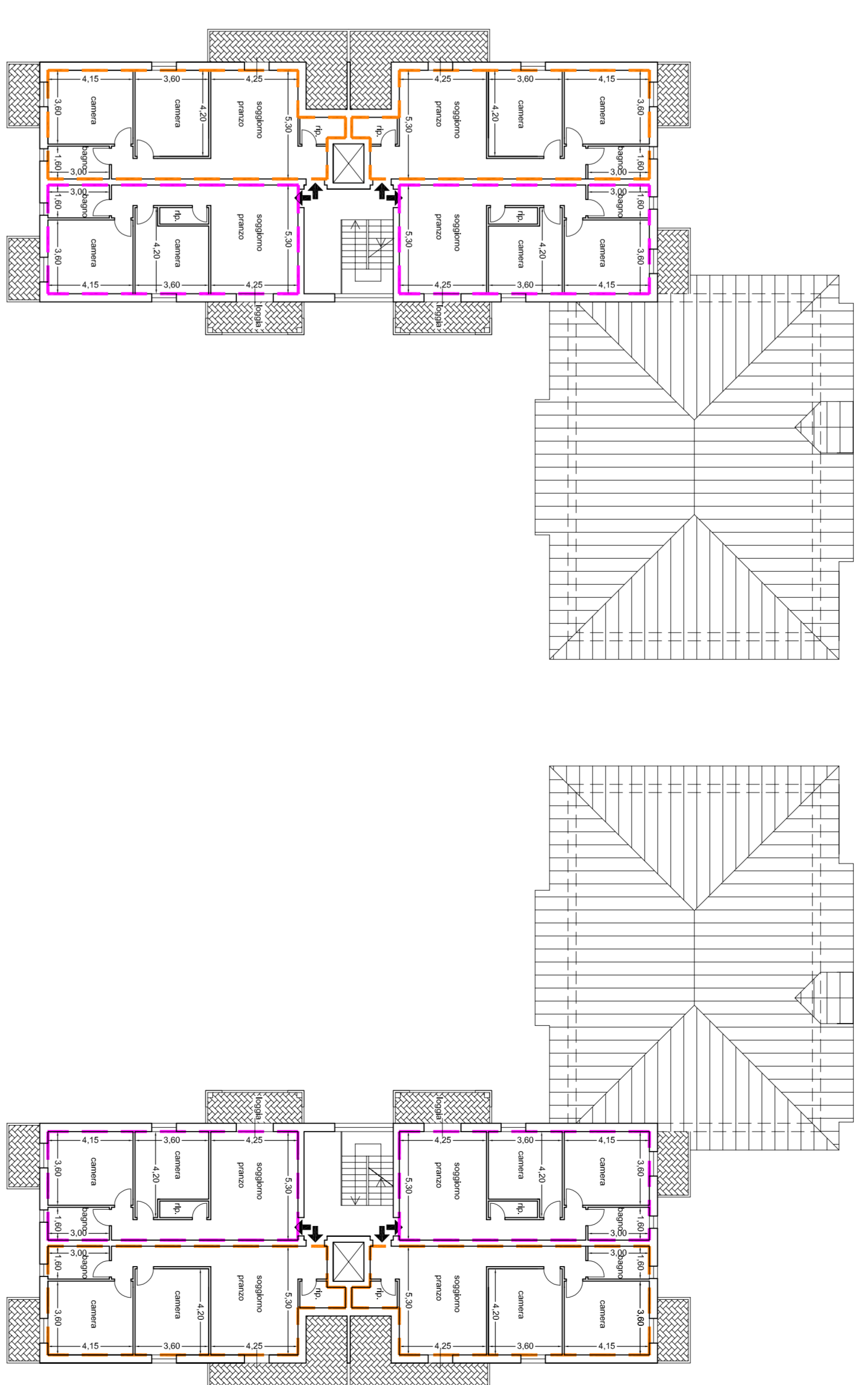
PIANO SECONDO  
(n. 4.143)



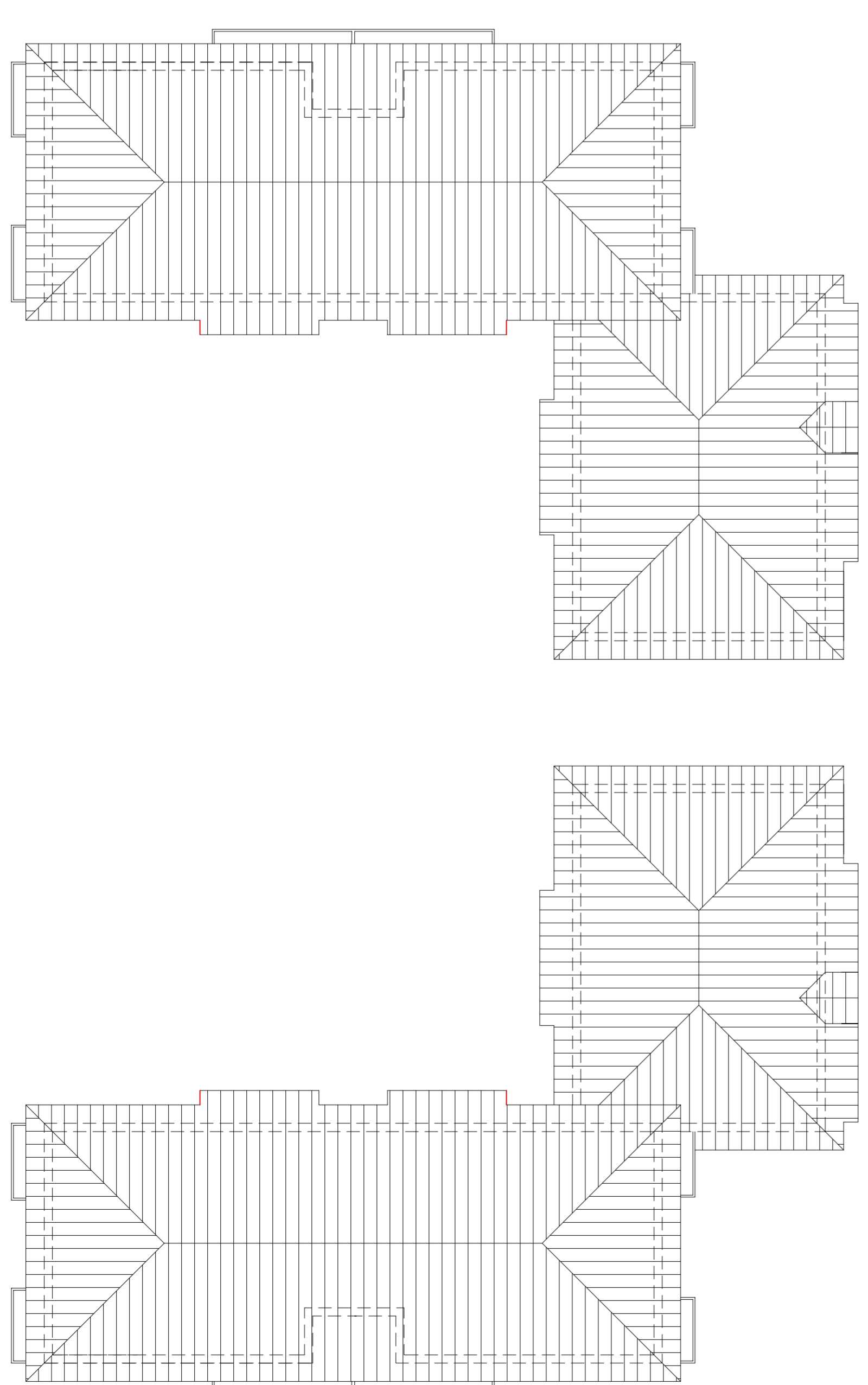
PIANO TERRA



PIANO PRIMO



PIANO SECONDO



COFERTURA