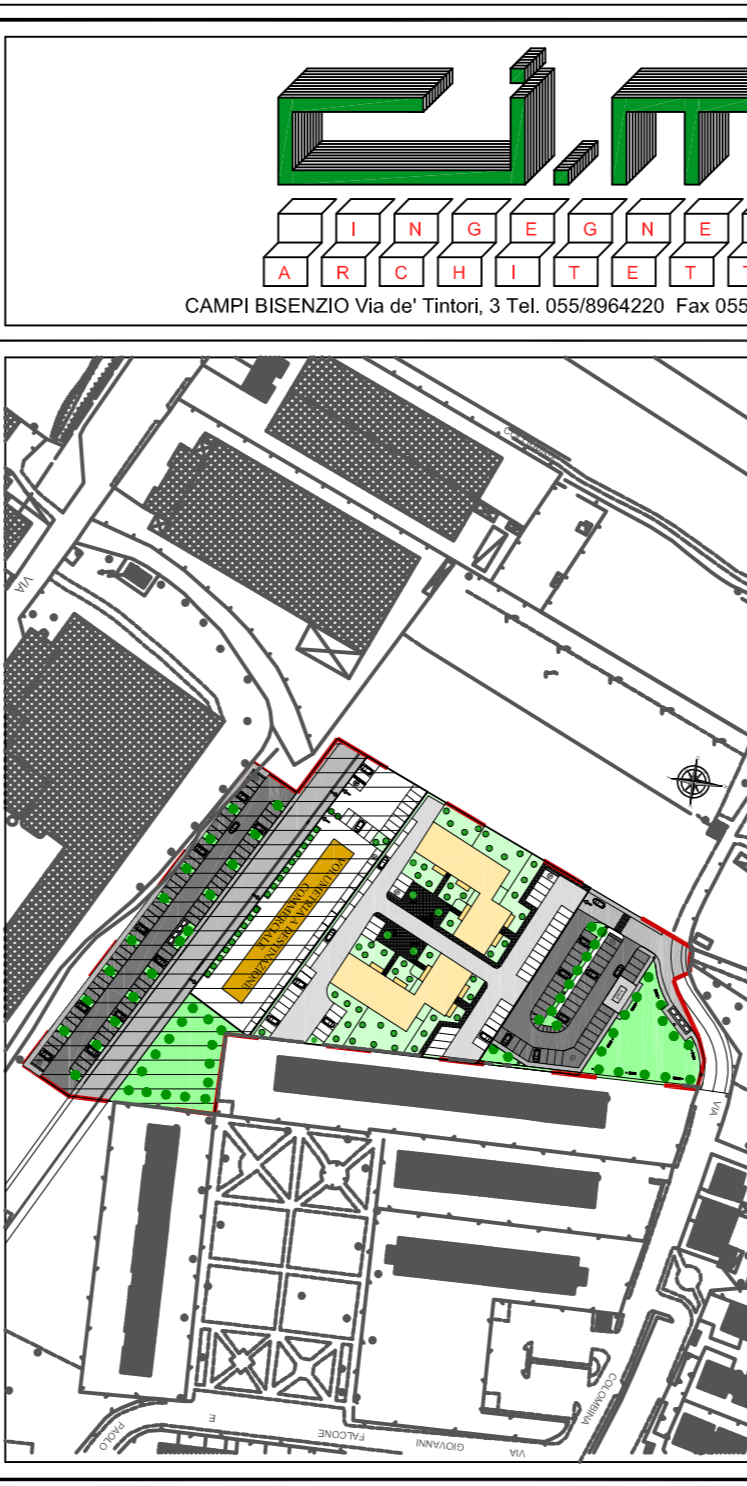
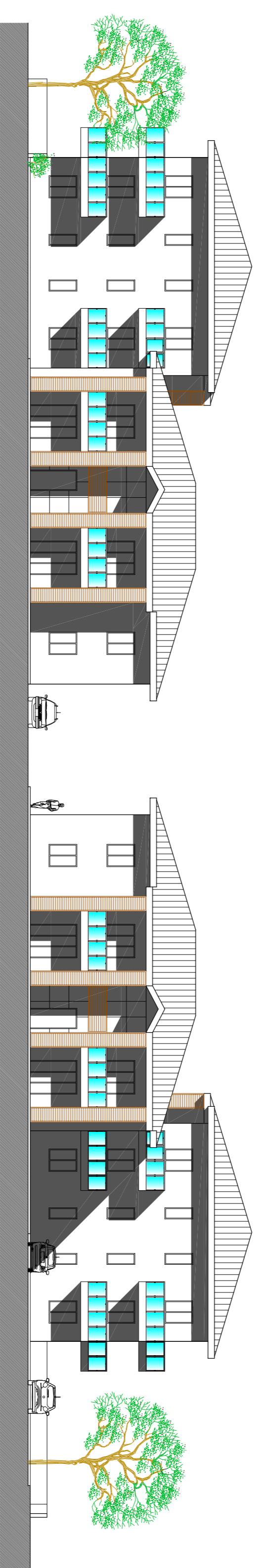
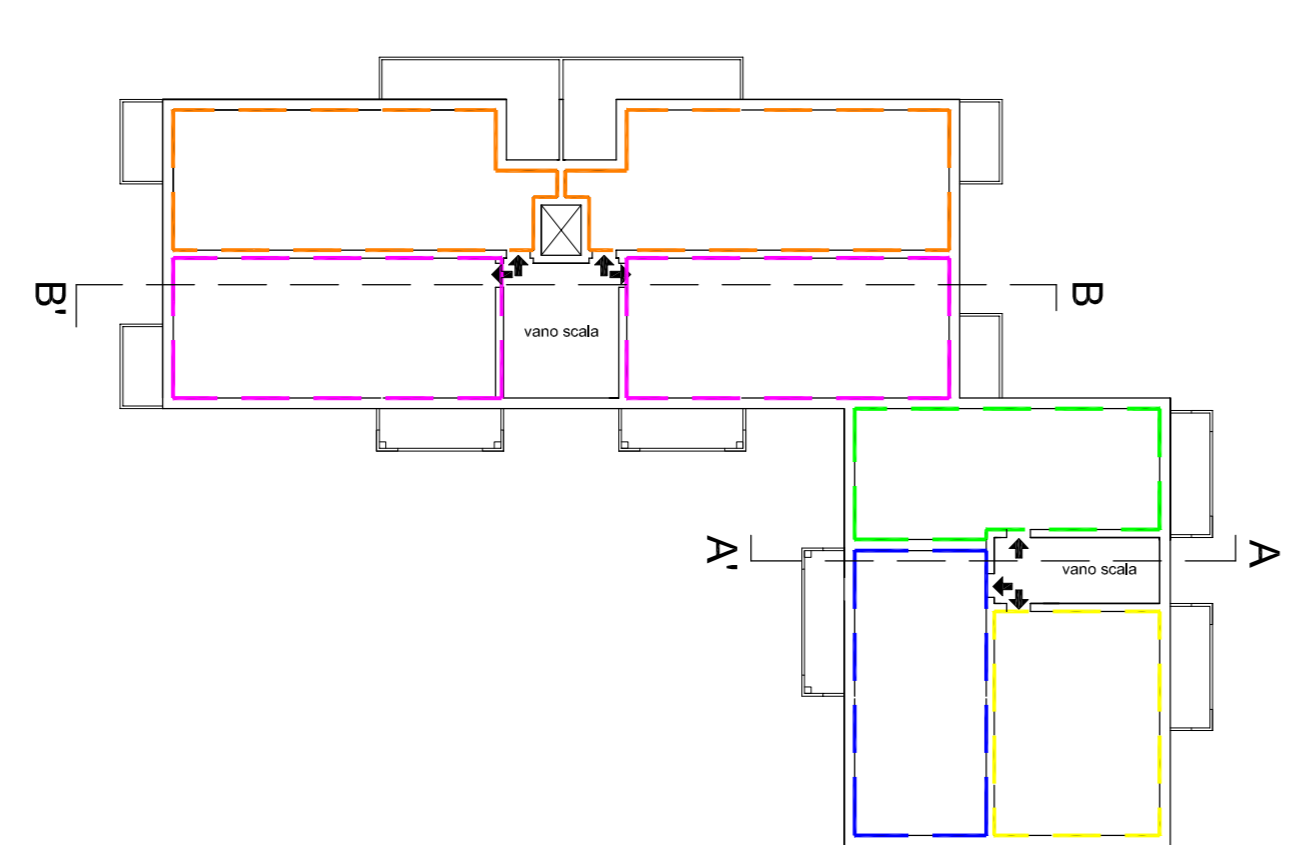
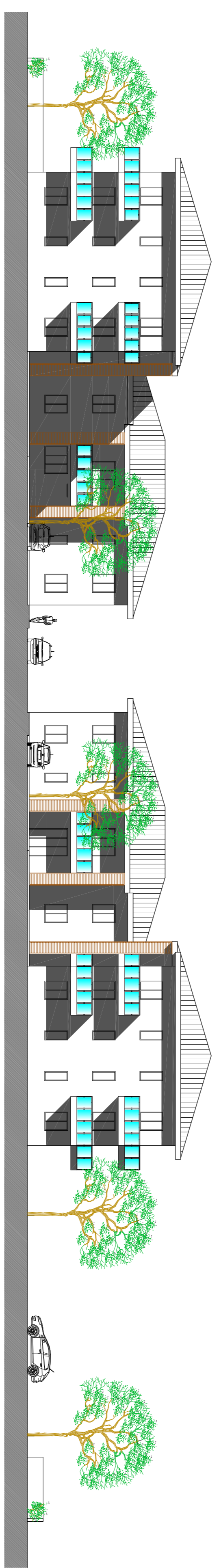


TAV. N. 6E PIANO DI MASSIMA UNITARIO P.M.U. 4.9B VIA COLOMBINA - LOC. LA VILLA-CAPALLE CAMPI BISENZIO (FI)		Scale: 1:200 Data: 10/2014 Fogli: 02/2015	Oggetto: E - PROGETTO PLANIVOLUMETRICO - (ip) edifici: prospetti e sezioni
Progettista: SOC. COOPERATIVA UNICA Viale Garibaldi n. 53 - 50124 FIRENZE		Progetto: Dot. Ing. FRANCO GIULLI	
			



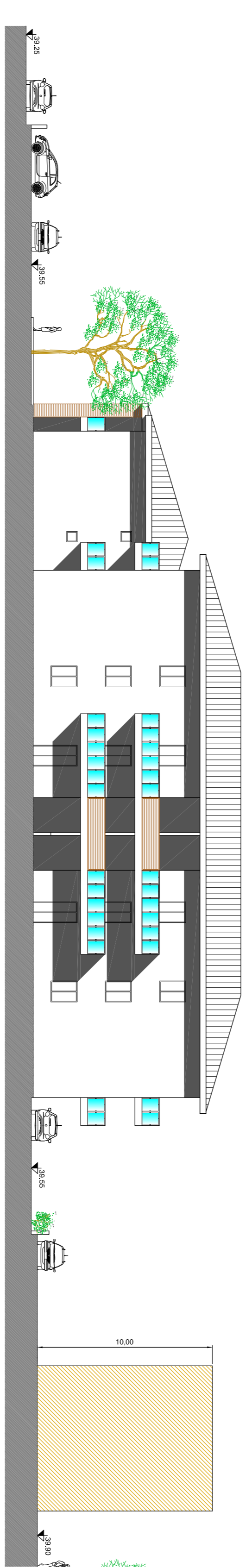
PROSPETTO PRINCIPALE
NORD



PROSPETTO TERGALE
SUD



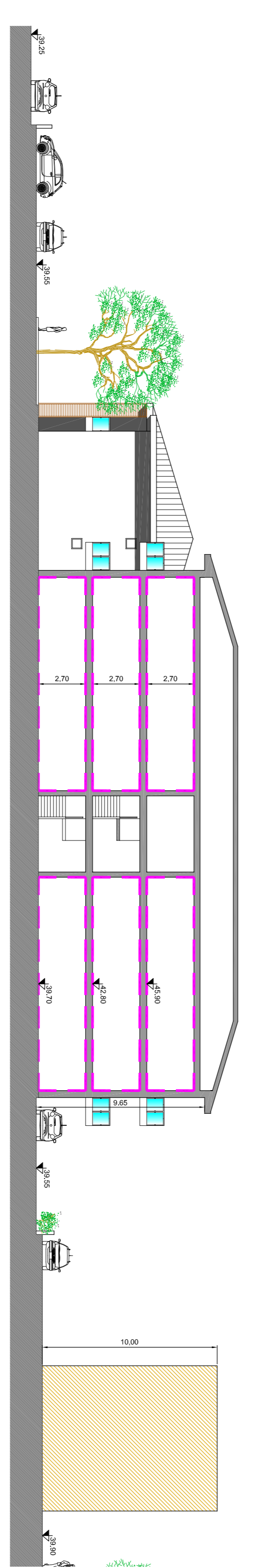
PROSPETTO LATO EST
CORTE INTERNA



PROSPETTO LATO OVEST
CORTE INTERNA



SEZIONE A - A'



SEZIONE B - B'